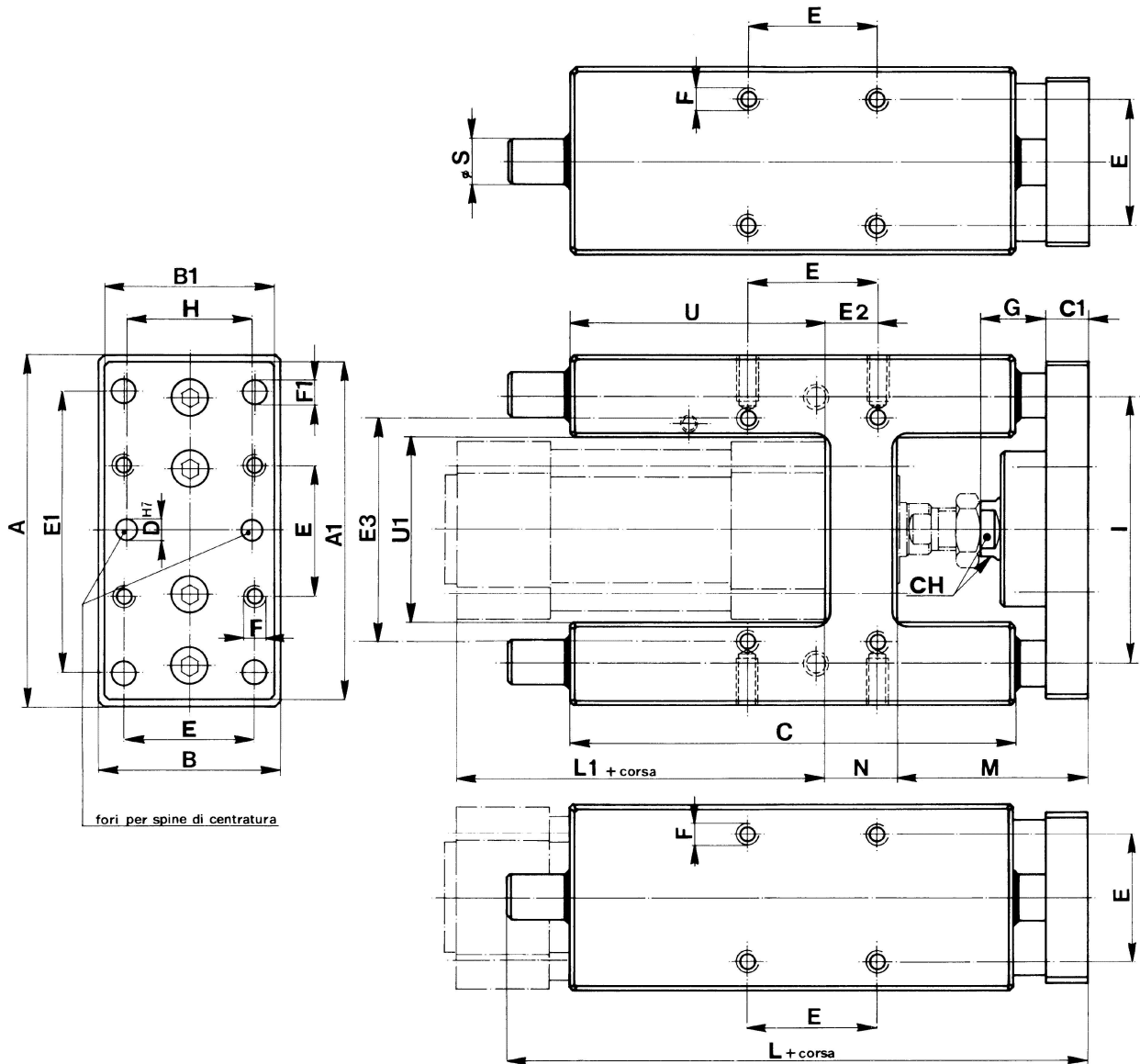


tipo "H" per cilindri ISO 6431

type "H" for cylinders ISO 6431



∅ CIL	A	A1	B	B1	C	C1	CH	D	E	E1	E2	E3	F	F1	G	H	I	L	L1	M	N	S	U	U1
32	97	90	50	45	125	12	13	6	32.5	78	4.3	61	M6	6.5	20	31	74	177	94	54	17	12	76	50.5
40	115	105	58	50	136	12	15	6	38	84	11	69	M6	6.5	22	36	87	192	105	55	21	16	81	58.5
50	137	124	70	60	144	15	21	6	46.5	100	18.5	85	M8	9	23	45	104	237	106	68	26	20	79	70.5
63	152	145	85	70	176	15	21	6	56.5	105	15.3	100	M8	9	23	45	119	237	121	68	26	20	111	85.5